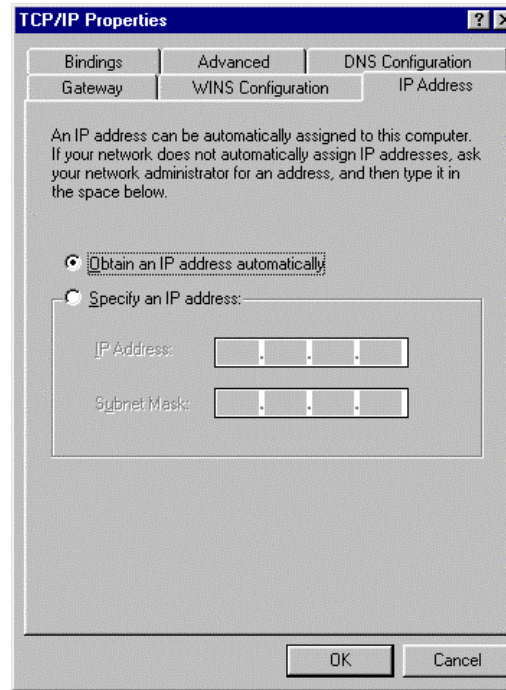
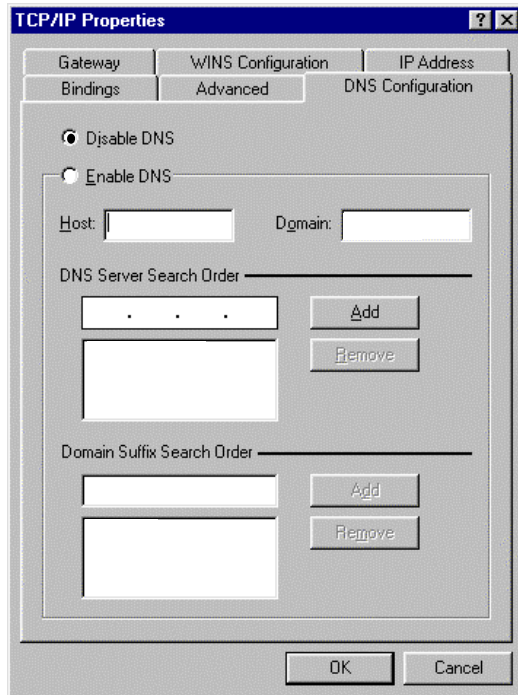


Installing & Configuring TCP/IP component in Windows 95/98

The IP address you obtain after the network card registration can only be used after installing TCP/IP protocol. This is done by installing the TCP/IP component in Windows 95/98. After installing and configuring TCP/IP, your computer can start to access the Internet.

1. In Windows 95/98, click the "START" button and select "Settings". In "Settings", select "Control Panel".
2. Double click on the Network icon in "Control Panel". You should only see your network card as shown below if it is Plug & Play compliant. If you do not see your network card, please go back to network card installation and configuration.
3. Click "Add" button to add the TCP protocol.
4. Choose "Microsoft" from the manufacturers list and "TCP/IP" protocol as shown below. Finally click "OK". You should see the TCP/IP entry in the configuration box.
5. Click TCP/IP and choose "Properties" or double-click the TCP/IP entry. Enter the values as shown below:



After filling all the values, click OK. You will be prompted to re-boot your computer at this stage. After re-boot, you should be able to access Internet services and Eudora E-mail. If you have not installed Netscape and Eudora, you can install these applications by clicking on the following links:

<ftp://ftp.ln.edu.hk/pub/netscape>

<ftp://ftp.ln.edu.hk/pub/software/windows/english>

Netware Client for Windows 95/98

The Netware Client for Windows 95/98 can connect your computer to your home drive (H:) in the file server. It allows you to transfer the file from your H drive (H:) in the campus file server to your c:\drive in the hostel. So you can use the documents in your hostel room or on campus. You can download the Netware client at the following URL:

<http://support.novell.com/>

For installation and configuration of Netware Client, please refer to the following URL:

<http://hostel.ln.edu.hk/networksoftware.html>



The hostels network is managed by Information Technology Services Centre. Our goal is to provide connections for hostel residents to use the Internet and campus wide facilities in support of their academic activities. Each hostel blocks (A to F) on the campus have built-in network facilities which are integrated to the campus wide network. Users can access directly from their own rooms or flats.

- Hardware & Software Requirements
- Network Card Installation & Configuration
- Network Card Registration
- Installing & Configuring TCP/IP component in Windows 95/98
- NetWare Client for Windows 95/98

Note: Please read the HostNet policies (<http://hostel.ln.edu.hk/policies.html>) before you start the installation.

Hardware & Software Requirements

In order to use the computing facilities on Hostnet, you will need:

- A PC with an Intel Pentium 75Mhz or better
- Minimum memory of 8Mb (16Mb recommended)
- Hard disk space of 540Mb or more
- Display card (SVGA) with at least 1Mb
- Microsoft Windows 95/98 Operating System
- A Network Card from the following recommended
 - 3c905-TX 3COM Fast Etherlink XL PCI 10/100 Base-TX
 - 3c509B-TPO 3COM Etherlink III 16-Bit ISA
 - Intel EE Pro/100BT PCI Lan Network Card
 - Intel EE Pro/10 TP ISA Lan Network Card

For more Network Card information, please visit:
http://www.ln.edu.hk/itsc/hostnet/net_card.html

Network Card Installation & Configuration

Step 1: Inserting the Adapter

1. Remove all jewelry from your hands and wrists.
2. Make sure you switch the computer power off, but leave the power cord plugged into the computer and wall outlet. Then remove the computer casing.
3. Use only insulated or non-conducting tools.
4. Locate an empty ISA slot (3Com EtherLink III ISA : 3C509B-TPO) or PCI slot (3Com Fast EtherLink XL : 3C905-TX) in your PC and remove the expansion slot backplate for that slot.

CAUTION:

Each adapter is packed in an anti-static container. Be sure that you are properly grounded before removing the adapter from its container. The card can easily be damaged by static if you fail to properly ground yourself. You can do this by leaving your computer plugged in (but the power off) and touching the bare metal housing of the power supply periodically.

5. Insert the adapter in the slot and secure the screw. You will need to press very firmly on the card in order to get it all the way into the slot. Be sure to press down only on the board and bracket, you should not be pressing down on any of the chips or other components on the card.

6. Replace the computer cover and reconnect all previously connected cables.

Step 2: Connecting to the Network

The adapter's backplate has a port for the RJ-45 connector. The adapter uses an on-board transceiver with twisted-pair cable. Insert the RJ-45 connector into its port on the adapter's backplate.

Step 3: Installing a client driver

The following instructions are only for IBM and compatible computers with 3Com Etherlink III ISA or 3Com Fast Etherlink XL PCI card running Windows 95/98. Please note that you may be prompted for either the Windows 95/98 CD-ROM or disks so be sure to have them handy, otherwise do not proceed.

Install the adapter and connect it to the network as described below:

1. Turn the computer on and start Windows 95/98. A message appears saying that new hardware has been found. If your computer does not recognize the adapter, try installing it in another slot.
2. When the New Hardware Found dialog box appears, select Driver from disk provided by hardware manufacturer and click OK.
3. Insert the EtherDisk diskette in drive A/B and click OK. Windows 95/98 copies the needed files from the EtherDisk diskette, then you will be prompted for the Windows 95/98 diskettes or CD.
4. After the files have completed copying, a dialog box appears asking if you want to reboot your computer.
5. Remove the EtherDisk diskette and reboot the computer.

Step 4: Confirming Adapter Installation in Windows 95/98

To confirm that the adapter is properly installed in your computer running Windows 95/98, proceed as follows:

1. Double-click the My Computer icon, double-click the Control panel icon, the double-click the System icon.
2. On the System Properties box that appears, click the Device Manager tab. A list of devices appears, arranged by type.
3. Click the Network Adapters entry. It will show an adapter's name that is already installed in the computer.
4. Double-click the adapter's name to display a description of the adapter and its current status. This means your network card is working properly.
5. Click the Cancel button to leave each dialog box.

Network Card Registration

After you completed the network card installation, you should register your network card through the following URL:

<http://hostel.ln.edu.hk/>

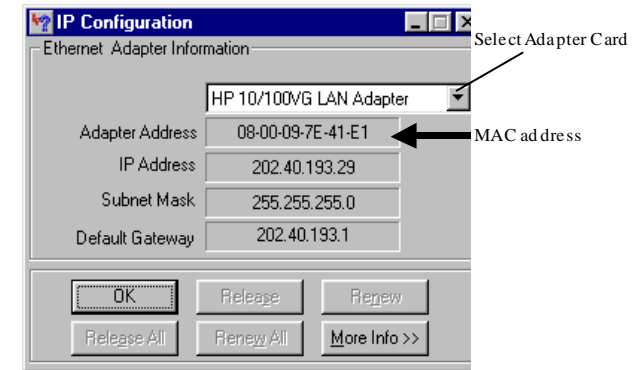
Click Register in the Registration Section

You need to provide the following information during the registration process:

1. Email ID. i.e. b9703001
2. MAC Address, e.g. 00C06C1A24DA.
3. Email Password

To obtain the MAC address of your network card, you can run the command "winipcfg" in Windows 95/98:

1. Press Start button and select Run
2. Enter "winipcfg".
3. You will then see the following box and in this case, the MAC address is 0800097E41E1
4. Data Outlet Number, e.g. HA303A



Caution: In case selected "PPP Adaptor", WINIPCFG will give a false and dummy MAC address "444553540000".

Please do not confuse with the "PPP Adapter" address with the Network card's address. You need to submit the network card address but not the "PPP Adapter" address.